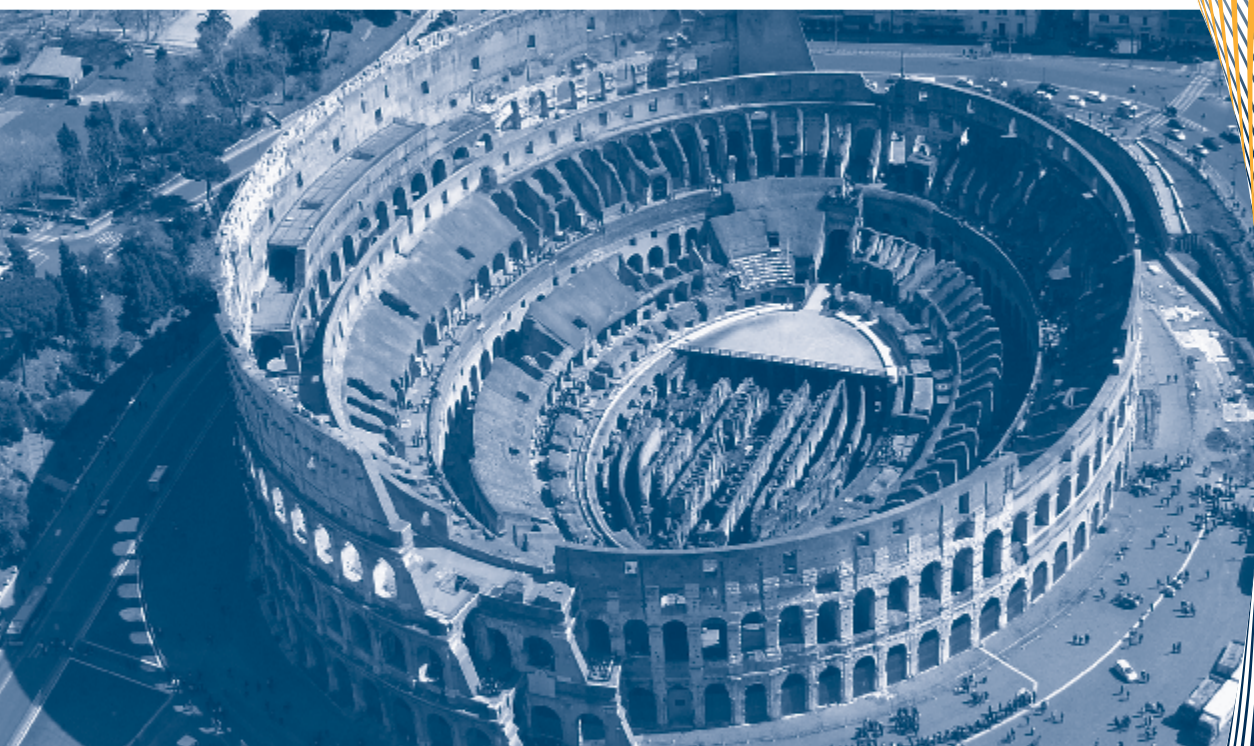


PARA
TEMPOTEST®
ITALIAN PERFORMANCE FABRICS



THE VIEW FROM THE SUN
MADE IN ITALY



WARRANTY

1. The warranty is valid for 10 years on Tempotest acrylic fabrics, 5 years on Tempotest STARLIGHT® FR, and 3 years on Tempotest STARSSCREEN® starting from the date of purchase.
2. The warranty exclusively covers the abnormal loss of color and/or strength due to normal exposure to the action of sun, salinity, and general atmospheric agents.
3. The warranty covers Tempotest fabrics exclusively. Any additional costs of manufacturing and installation, which could be requested by the installer or by the retailer, are not covered by the warranty.
4. The warranty does not cover damage due to circumstances beyond one's control, e.g. fire, flood, bird excrements, or air pollution. Also, the warranty excludes damage caused by mechanical actions or fraudulent actions. In particular, the formation of micro-holes in the cover, due to the mechanical action of opening and closing of an awning, is excluded from the warranty. Subtle differences in appearance of color saturation may occur over time resulting from atmospheric agents and pollution. This does not compromise the chemical, physical, and technical features of Tempotest fabrics.
5. Tempotest fabrics are components of a finished product. The warranty must be claimed against the retailer or installer from whom the finished products are purchased.
6. The warranty is not valid in the case of improper use and/or improper installation.
7. The responsibility of Parà is expressly limited to this warranty. Parà reserves the right to inspect the fabric that is the object of the claim and ask for proof of purchase.

In the case of an acknowledged defect in the Tempotest acrylic fabric within the 10-year warranty period, Parà will supply fabric equivalent to 100% of the value of the defective fabric up through the 8th year from the purchase date. In the 9th year, Parà will supply this fabric with a 30% discount. In the 10th year, Parà will supply this fabric with a 15% discount.

In the case of an acknowledged defect in the Tempotest Starlight FR fabric within the 5-year warranty period, Parà will supply fabric equivalent to 100% of the value of the defective fabric up through the 3rd year from the purchase date. In the 4th year, Parà will supply this fabric with a 50% discount. In the 5th year, Parà will supply this fabric with a 30% discount.

In the case of an acknowledged defect in the Tempotest Starscreen fabric within the 3-year warranty period, Parà will supply fabric equivalent to 100% of the value of the defective fabric.



PARÀ GROUP

A HISTORY OF ITALIAN EXCELLENCE

The Parà Industrial Group was founded in 1921. For over 3 generations, this family-owned company has been producing premium, high-performance textiles used in a variety of applications including sun protection, marine, and indoor/outdoor furnishing and accessories.

Parà has grown into a globally recognized brand, thanks in part to its hallmark Italian style. This, along with a continuous commitment to innovation and producing only the highest quality products, has established Parà as a key player in the international market.

The Parà Group has earned the reputation for manufacturing some of the industry's highest quality textiles. **Made in Italy** with a strong focus on every detail - from the spinning and weaving stages, through the printing and dyeing, to the coating and finishing line - the Parà Group has become synonymous with high-end quality, style, and service.



TEFLON EXTREME® BY PARÀ

Parà has always treated Tempotest fabrics with Teflon™ Fabric Protector. This ensures a product with outstanding performance while maintaining minimum impact on the environment. Teflon has been providing reliable protection performance for millions of satisfied customers for over 80 years.

Parà developed a higher performing formulation of fluorocarbon resins with 6 carbon atoms (a formulation known as C6) instead of the older and more commonly used C8 technology. This upgrade allowed Parà to no longer rely on perfluorooctanoic acid (PFOA), or any of its derivatives (PFOS), which resulted in a production process with a far lower environmental impact.

The partnership between Parà and Chemours™ puts science to work for our customers. Teflon EXTREME® by Parà Fabric Protector was developed to reduce the environmental impact, while helping extend the life of the fabric. Teflon fabric protection equates to fewer required washing cycles, less water use, and lower temperatures needed for effectively washing and drying. This results in less energy consumption overall and is therefore less harmful to the planet. Parà prides itself on a continuous commitment to developing and adopting more sustainable production methods.

During tests, products treated with Teflon Extreme showed a reduced need to clean stains from the fabrics. The dirt had a tendency to form drops that simply ran off the fabric. Treated fabrics allowed for easier cleaning and removal of stains while also drying more efficiently when compared to fabrics not treated with Teflon Extreme.



TEFLON™



NO TEFLON™

TEFLON™ is a registered trademark of Chemours used under license by Parà S.p.A.

SANITIZED

Expect a lot! SANITIZED® AG is a leading global manufacturer of products for anti-microbial protection for textile and plastic materials. For over 50 years, this Swiss company has developed special anti-microbial hygienic solutions using the latest technologies.

SANITIZED is committed to continually researching its products. They only use active ingredients and components that have been registered as anti-microbial, and therefore have been subjected to strict controls against the risk of harm to human health and the environment.

In order to avoid the formation of mold due to the accumulation and stagnation of water on the fabric, all Tempotest Coated fabrics are treated by Parà with a special SANITIZED finishing.



SOLIDS, TEXTURES, & TWEEDS



THE VIEW FROM THE SUN

Seeing things from the point of view of the sun can allow us to reach a broader perspective. The frequencies of sunlight contain information for our health, wealth, and evolution. The sun is a gateway through which the universe communicates using a particular language: the code of light. Through the code of light, Parà presents our new Tempotest Collection which reflects a reinterpretation of colored fabrics, textures, and patterns that reveal the secrets of a fresh perspective.

TECHNICAL FEATURES	
Composition	Width (UNI EN 1773/98)
100% solution-dyed acrylic fiber	47"
	60"
	80"
Weight (UNI EN 5114/82)	Water Column (UNI EN 20811)
8.8 oz/yd ² (+/- 5%)	≥ 38 cm
🔥 > 9.7 oz/yd ² (+/- 5%)	🔥 > 100 cm

Tempotest fabric meets all requirements of paragraph 15.2 of UNI EN 13561:2009. The data corresponds to the material at the moment this technical data sheet was printed. Parà reserves the right to make changes to improve the product technologically. The updated technical data is available at tempotestusa.com.



General warranty terms on tempotestusa.com



White
T15-47 | T15-60 | T15-60C



Snow
T15/93-47 | T15/93-60 | T15/93-60C



Latte
T15/52-47 | T15/52-60



Vanilla
T929-47



Antique Beige
T88-47



Greige
T1304-47



Crest Cement
T4015/91-47



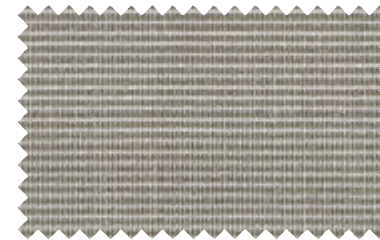
Buttercream
T93-47



Cream
T15/1-47 | T15/1-60 | T15/1-60C



Seagrass
T5407/94-47
NEW



Driftwood Tweed
T407/926-47 | T407/926-60
NEW WIDTH



Driftwood
T926-47 | T926-60



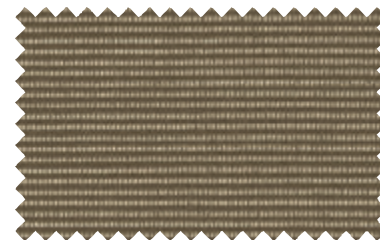
Pearl
T151/929-47



Linen
T4215/15-47



Beige
T52-47 | T52-60 | T52-60C



Beige Tweed
T407/52-60



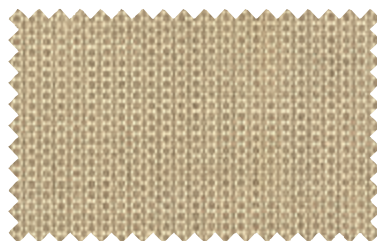
Cappuccino
T102-47 | T102-60



Tan
T14-47



Durmast
T782/14-47



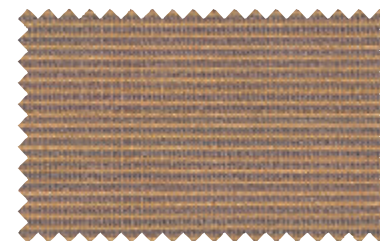
Dune Tweed
T873/151-47
NEW



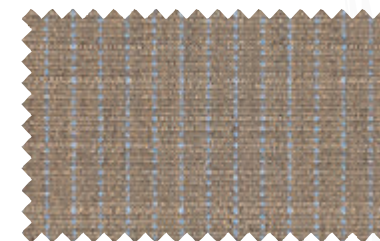
Oyster
T15/14-47 | T15/14-60 | T15/14-60C



Toast
T101-47 | T101-60



Noisette Tweed
T407/14-47



Toffee Gessato
T1330/508-47
NEW



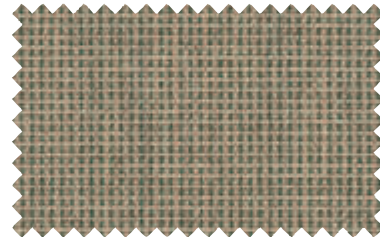
Toffee
T106-47 | T106-60



Mudslide
T5406/94-47



NEW



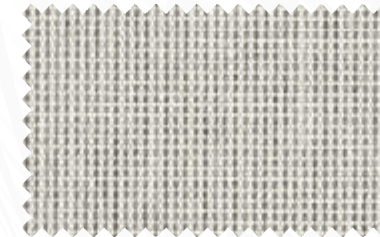
Bisquit Tweed
T986/106-47



Chocolate
T81-47 | T81-60



Mist
T15/79-47 | T15/79-60 | T15/79-60C



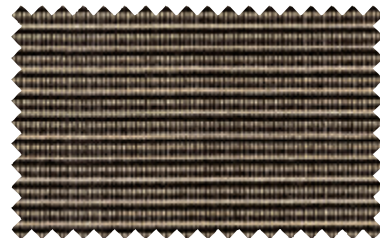
Ice Tweed
T986/15-47



Coriander
T5406/52-47



NEW



Sesame
T5407/52-47



NEW



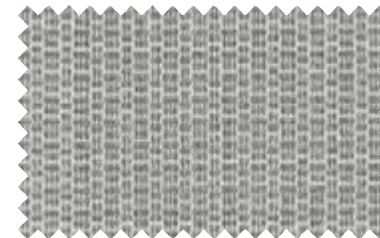
Brown
T18-47



Silk Grey
T5407/15-47



NEW



Ice Grey
T5406/15-47



NEW



Silver
T79-47 | T79-60



NEW WIDTH



Sequoia
T57/1-47



NEW



Coffee
T57-47



Henna
T57/54-47



NEW



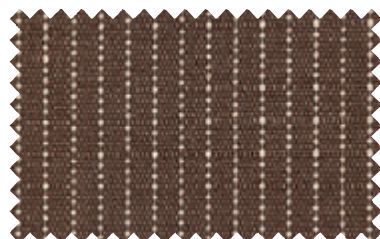
Grey Tweed
T407/94-47



Pebble
T727/15-47



Lead
T94/15-47



Hazelnut Gessato
T1330/509-47



NEW



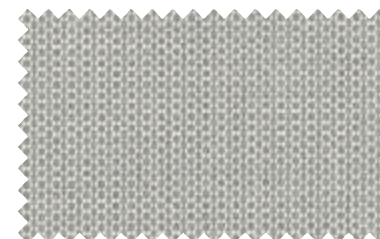
Hazelnut
T930-47



Bisque Tweed
T873/2-47



Grey
T94-60 | T94-60C



Glacier Tweed
T873/15-47



NEW



Ash Gessato
T1330/505-47



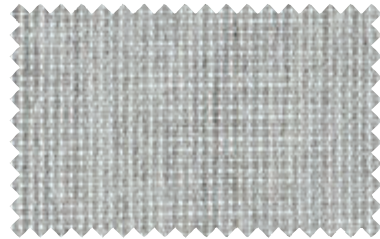
NEW



The technical values are available on tempotestusa.com website or by scanning the QR code

Part #-47 = 47" | Part #-60 = 60" | Part #-60C = coated 60" | Part #-80 = 80" | [P] = Premium color

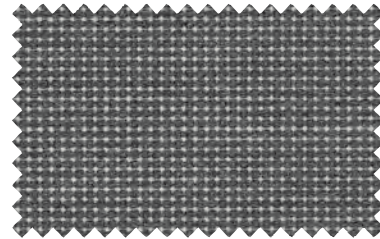




Pebble Tweed
T986/727-47



Metal
T727/71-47



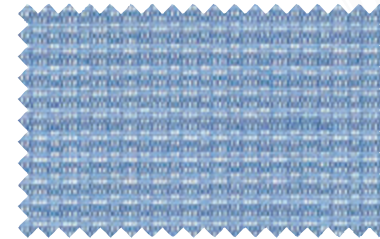
Carbon Tweed
T986/107-47



NEW



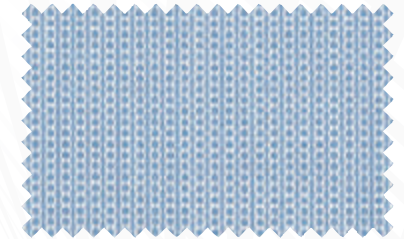
Lavender
T74/15-47



Sky Blue
T5406/17-47



NEW



Skyway Tweed
T873/17-47



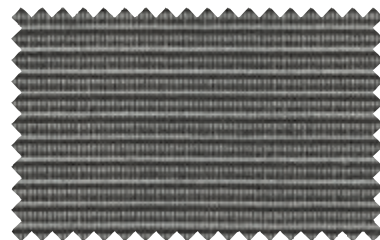
NEW



Carbon Fiber
T5406/107-47



NEW



Turbulence
T5407/107-47



NEW



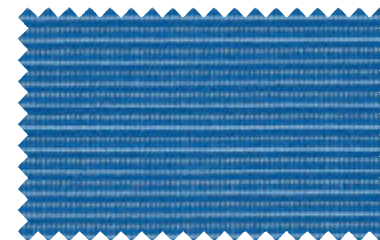
Carbon Gessato
T1330/512-47



NEW



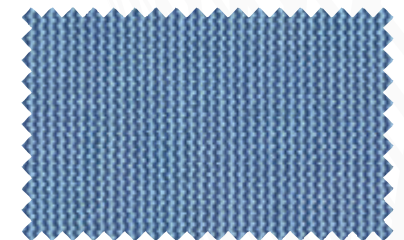
Mid Blue
T17/15-47



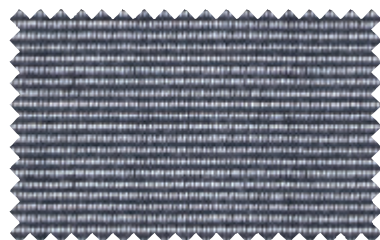
Skydiver
T5407/17-47



NEW



Wave
T782/87-47



Silver Tweed
T407/79-47 | T407/79-60



Carbon
T107-47



Charcoal
T97-47 | T97-60



Powder Blue
T21-47 | T21-60 | T21-60C



Spa
T71/15-47



Shoreline
T22-47 | T22-60



NEW WIDTH



Eggplant
T97/84-47



Midnight Blue
T97/13-47



Plum
T91-47



Bluette
T77-47



Pacific Blue
T416-47 | T416-60 | T416-60C



Prussian Blue
T13-47



The technical values are available on tempotestusa.com website or by scanning the QR code

Part #-47 = 47" | Part #-60 = 60" | Part #-60C = coated 60" | Part #-80 = 80" | [P] = Premium color

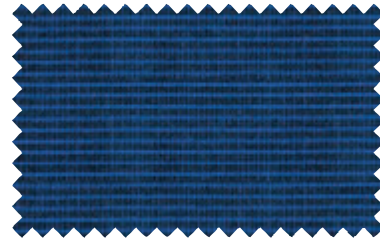




Intense Blue
T414-60



Cobalt
T10-47



Royal Blue Tweed
T407/13-47 | T407/13-60



Forest Green
T5-47 | T5-60 | T5-60C | T5-80



NEW WIDTH



Forest Tweed
T407/6-47 | T407/6-60



Jungle
T97/8-47



Sapphire
T87-47



Air Force Blue
T87/8-47



NEW



Navy
T75-47 | T75-60 | T75-60C



Musk Tweed
T407/3-47



Soccer Field
T62/15-47



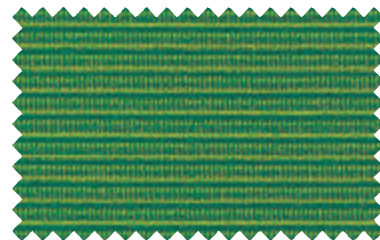
Olive
T7-47



Indigo
T92-47 | T92-60 | T92-60C



Lime
T16-47



Irish Green
T5407/6-47



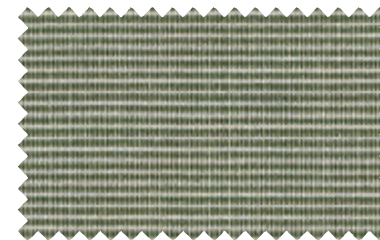
NEW



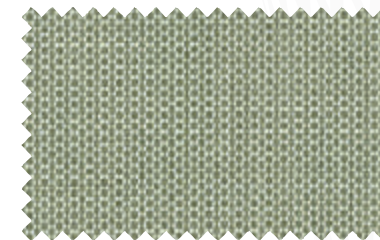
Chive
T7/14-47



NEW



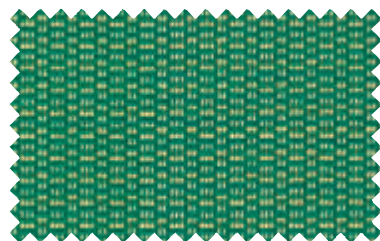
Sage Tweed
T407/16-47



Lettuce Tweed
T873/78-47



NEW



Bright Green
T5406/6-47



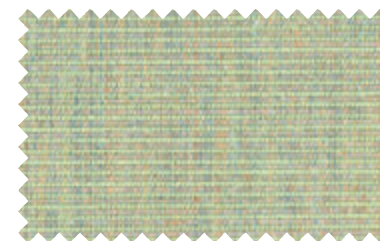
NEW



Pool Green
T6-47



Pine Green
T8-47



Pistachio
T1302-47



Coral Pink
T20-47



Complexion
T26/15-47





Candy Pink
T25/15-47



Antique Pink
T53-47



Light Lemon Tweed
T407/4-47



Lemon Cream
T15/12-47



Sunshine
T684/12-47



Sunflower [P]
T12-47 | T12-60



Camel
T58/15-47



Ochre
T54-47



Pumpkin Tweed
T407/8-47



Orange Tweed
T407/9-47



Bright Orange
T55-47



Orange
T72-47



Holland Tweed
T407/5-47



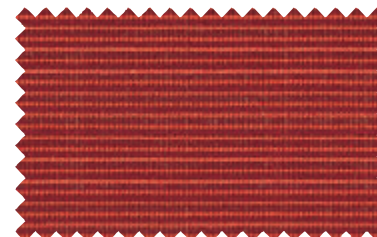
Sicily Orange
T19-47



Harvest Pumpkin
T5406/73-47



NEW



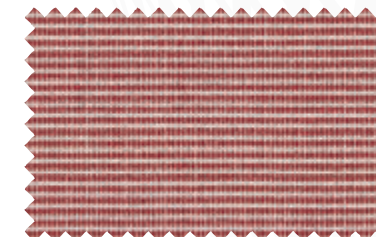
Bossa Nova
T5407/73-47



NEW



Brick [P]
T426-47 | T426-60



Brick Tweed
T407/84-47



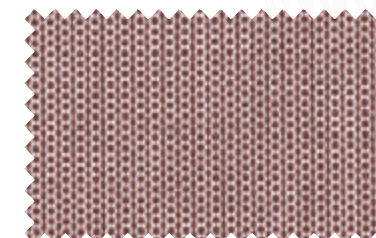
Chutney
T84/14-47



NEW



Rust
T84-47



Deco Rose Tweed
T873/73-47



NEW



Paris Red
T56-47



Red [P]
T11-47 | T11-60 | T11-60C



Clay Court
T98-47





Maroon [P]
T415-60 | T415-60C



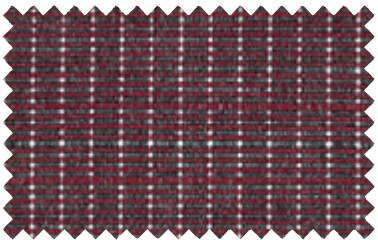
Burgundy [P]
T73-47 | T73-60 | T73-80



NEW WIDTHS



Red Tweed [P]
T407/11-47 | T407/11-60



Merlot Gessato
T1330/513-47



NEW



Black
T24-47 | T24-60 | T24-60C | T24-80



LIFESTYLE COLLECTION

LIFESTYLE COLLECTION • A superior standard of research

In-depth research into colors and styles has prompted us to create truly exquisite fabrics. The sophisticated final effect is provided by even more beautiful hues, bursting with vitality and enhanced by elaborate textures.



EFFETTO SETA CRUDA





SETA CRUDA • The return to the natural beauty of imperfection





A combination of textures which, thanks to a special process, enhance the design of these fabrics with details that are naturally uneven.



TECHNICAL FEATURES

COLOR #	NAME	PAGE					PANTONE	Tempotest Home
T10	Cobalt	12	99%	99%	50+	0.08	19-3864	TH10
T101	Toast	7	89%	99%	50+	0.12	16-1341	TH101
T102	Cappuccino	7	85%	94%	50+	0.13	15-1215	TH102
T106	Toffee	8	95%	99%	50+	0.09	18-1018	TH106
T107	Carbon	10	99%	99%	50+	0.02	19-0000	TH107
T11	Red [P]	15	84%	99%	50+	0.14	19-1763	TH11
T12	Sunflower [P]	14	81%	87%	50+	0.16	13-0947	TH12/15
T13	Prussian Blue	11	95%	99%	50+	0.10	19-4049	TH13
T1302	Pistachio	13	88%	94%	50+	0.12	14-0210	
T1304	Greige	7	90%	97%	50+	0.11	15-1309	
T1330/505	Ash Gessato ●	9	96%	96%	45	0.09		TH727/15
T1330/508	Toffee Gessato ●	7	92%	97%	50+	0.10		TH106
T1330/509	Hazelnut Gessato ●	8	98%	99%	50+	0.08		TH930
T1330/512	Carbon Gessato ●	10	99%	99%	50+	0.08		TH107
T1330/513	Merlot Gessato ●	16	98%	99%	50+	0.09		TH73/15
T14	Tan	7	96%	98%	50+	0.09	16-1315	TH14/15
T15	White	6	73%	73%	15	0.19	11-4300	TH15
T15/1	Cream	6	85%	86%	50+	0.13	13-0513	TH151/15
T15/12	Lemon Cream	14	76%	78%	50+	0.17	12-1006	TH105/15
T15/14	Oyster	6	83%	85%	40	0.14	13-0403	TH1033/929
T15/52	Latte	6	80%	81%	35	0.16	13-0000	
T15/79	Mist	9	81%	83%	25	0.15	14-4201	TH79/15
T15/93	Snow	6	74%	74%	25	0.18	12-0404	
T151/929	Pearl	6	85%	87%	40	0.13	12-0605	TH1039/14
T16	Lime	12	90%	98%	50+	0.12	16-0237	TH16
T17/15	Mid Blue	11	82%	93%	50+	0.15	16-4020	TH17/15
T18	Brown	8	99%	99%	50+	0.08	19-1241	TH57
T19	Sicily Orange	15	85%	98%	50+	0.14	18-1445	TH19
T20	Coral Pink	13	83%	96%	50+	0.15	17-1635	TH20
T21	Powder Blue	11	84%	95%	50+	0.14	16-4414	TH21/15
T22	Shoreline	11	88%	96%	50+	0.12	16-5123	TH22
T24	Black	16	99%	99%	50+	0.02	19-0303	TH24
T25/15	Candy Pink	14	78%	88%	50+	0.17	14-1419	TH25/15
T26/15	Complexion	13	82%	92%	50+	0.15	15-1239	TH26/15
T4015/91	Crest Cement	6	83%	85%	50+	0.14	13-5304	
T407/11	Red Tweed [P]	16	92%	99%	50+	0.11	19-1650	TH73/15
T407/13	Royal Blue Tweed	12	99%	99%	50+	0.03	19-4027	TH75
T407/14	Noisette Tweed	7	96%	95%	50+	0.07	18-1022	
T407/16	Sage Tweed	13	96%	97%	50+	0.09	17-0610	
T407/3	Musk Tweed	13	99%	99%	50+	0.08	19-5511	TH62/15
T407/4	Light Lemon Tweed	14	76%	76%	50+	0.17	11-0618	
T407/5	Holland Tweed	15	84%	96%	50+	0.14	17-1464	TH19
T407/52	Beige Tweed	7	94%	95%	50+	0.10	16-1010	
T407/6	Forest Tweed	13	99%	99%	50+	0.02	19-5420	TH5

COLOR #	NAME	PAGE					PANTONE	Tempotest Home [®] ITALIAN PERFORMANCE FABRICS
T407/79	Silver Tweed	10	96%	98%	50+	0.09	18-5203	
T407/8	Pumpkin Tweed	14	87%	95%	50+	0.13	16-1253	TH54/15
T407/84	Brick Tweed	15	93%	97%	50+	0.10	17-1525	
T407/9	Orange Tweed	14	81%	89%	50+	0.15	14-1050	TH55
T407/926	Driftwood Tweed	7	95%	97%	50+	0.09	17-1506	TH926
T407/94	Grey Tweed	9	94%	96%	50+	0.09	16-0000	TH94/15
T414	Intense Blue	12	99%	99%	50+	0.08	19-3950	TH10
T415	Maroon [P]	16	99%	99%	50+	0.08	19-1650	TH73/15
T416	Pacific Blue	11	95%	99%	50+	0.10	18-4440	TH13
T4215/15	Linen	6	86%	88%	50+	0.13	13-0607	TH52/15
T426	Brick [P]	15	99%	99%	50+	0.08	19-1250	TH426/15
T5	Forest Green	13	99%	99%	50+	0.02	18-5322	TH5
T52	Beige	6	88%	91%	50+	0.12	15-1216	TH52/15
T53	Antique Pink	14	82%	87%	40	0.15	14-1213	
T54	Ochre	14	92%	99%	50+	0.10	16-1150	TH54/15
TS406/107	Carbon Fiber ●	10	97%	98%	50+	0.09	19-0312	
TS406/15	Ice Grey ●	9	89%	89%	20	0.12	14-4201	
TS406/17	Sky Blue ●	11	83%	91%	50+	0.14	14-4318	TH17/15
TS406/52	Coriander ●	8	96%	97%	50+	0.09	17-1113	
TS406/6	Bright Green ●	12	93%	97%	50+	0.10	15-5534	
TS406/73	Harvest Pumpkin ●	15	92%	96%	50+	0.11	16-1260	
TS406/94	Mudslide ●	8	96%	99%	45	0.09	16-1106	
TS407/107	Turbulence ●	10	99%	99%	50+	0.08	19-4215	TH51377/720
TS407/15	Silk Grey ●	9	89%	89%	20	0.12	14-4201	TH79/15
TS407/17	Skydiver ●	11	91%	98%	50+	0.11	19-4151	TH13
TS407/52	Sesame ●	8	94%	95%	50+	0.10	18-1027	
TS407/6	Irish Green ●	12	93%	99%	50+	0.10	16-6138	
TS407/73	Bossa Nova ●	15	92%	99%	50+	0.11	18-1547	
TS407/94	Seagrass ●	7	96%	96%	45	0.09	16-6008	TH1043/929
T55	Bright Orange	14	82%	92%	50+	0.15	15-1164	TH55
T56	Paris Red	15	86%	98%	50+	0.13	18-1662	TH56/15
T57	Coffee	8	99%	99%	50+	0.08	18-1130	TH57
TS7/1	Sequoia	8	99%	99%	50+	0.08	19-1333	TH57
TS7/54	Henna	8	99%	99%	50+	0.08	19-1334	TH57
TS8/15	Camel	14	93%	98%	50+	0.10	16-0940	TH58/15
T6	Pool Green	12	97%	99%	50+	0.09	18-5841	
T62/15	Soccer Field	13	99%	99%	50+	0.08	18-6320	TH62/15
T684/12	Sunshine	14	79%	83%	50+	0.16	13-0941	TH105/15
T7	Olive	13	99%	99%	50+	0.02	19-0315	TH7
T7/14	Chive	13	99%	99%	50+	0.02	19-0323	TH7
T71/15	Spa	11	84%	89%	50+	0.13	13-5315	TH71/15
T72	Orange	14	85%	96%	50+	0.13	17-1464	
T727/15	Pebble	9	97%	98%	50+	0.08	17-0000	TH727/15
T727/71	Metal	10	97%	98%	50+	0.08	17-4402	

COLOR #	NAME	PAGE					PANTONE	Tempotest Home [®] ITALIAN PERFORMANCE FABRICS
T73	Burgundy [P]	16	99%	99%	50+	0.08	19-1726	TH73/15
T74/15	Lavender	11	85%	98%	50+	0.14	17-3932	
T75	Navy	12	99%	99%	50+	0.02	19-4027	TH75
T77	Bluette	11	90%	99%	50+	0.12	18-4537	TH77/15
T782/14	Durmast	6	89%	91%	50+	0.12	15-1116	TH51377/760
T782/87	Wave	11	92%	97%	50+	0.11	17-4015	TH87/15
T79	Silver	9	92%	95%	50+	0.10	16-5803	TH79/15
T8	Pine Green	12	94%	99%	50+	0.10	18-5338	
T81	Chocolate	9	99%	99%	50+	0.02	19-0915	TH81
T84	Rust	15	99%	99%	50+	0.08	19-1338	TH426/15
T84/14	Chutney	15	99%	99%	50+	0.08	18-1433	
T87	Sapphire	12	99%	99%	50+	0.08	19-3938	TH87/15
T87/8	Air Force Blue	12	99%	99%	50+	0.08	19-4916	
TH873/15	Glacier Tweed	9	89%	89%	20	0.12	14-4102	TH53777/710
TH873/151	Dune Tweed	6	89%	92%	50+	0.12	14-1112	TH1039/930
TH873/17	Skyway Tweed	11	78%	84%	25	0.17	14-4112	
TH873/2	Bisque Tweed	8	99%	99%	50+	0.02	19-0812	TH873/81
TH873/73	Deco Rose Tweed	15	90%	93%	25	0.11	17-1614	
TH873/78	Lettuce Tweed	13	91%	92%	30	0.11	16-5815	
TH88	Antique Beige	7	88%	89%	50+	0.12	14-4002	
TH91	Plum	10	87%	99%	50+	0.13	17-3612	TH91
TH92	Indigo	12	99%	99%	50+	0.02	19-4023	TH92
TH926	Driftwood	7	99%	99%	50+	0.08	18-1110	TH926
TH929	Vanilla	7	89%	93%	50+	0.11	14-0002	TH929
TH93	Buttercream	6	78%	77%	50+	0.17	13-0815	TH93/15
TH930	Hazelnut	8	99%	99%	50+	0.08	19-1121	TH930
TH94	Grey	9	97%	98%	50+	0.08	16-5803	TH94/15
TH94/15	Lead	9	97%	98%	50+	0.08	17-1210	TH94/15
TH97	Charcoal	10	99%	99%	50+	0.02	18-0201	TH97
TH97/13	Midnight Blue	10	99%	99%	50+	0.02	19-4110	
TH97/8	Jungle	13	98%	99%	50+	0.09	19-5920	
TH97/84	Eggplant	10	99%	99%	50+	0.03	18-1404	
TH98	Clay Court	15	90%	99%	50+	0.11	19-1557	
TH986/106	Bisquit Tweed	8	95%	97%	50+	0.09	16-1126	TH106
TH986/107	Carbon Tweed	10	99%	99%	50+	0.08	18-4005	TH51377/720
TH986/15	Ice Tweed	9	83%	85%	35	0.14	14-4500	
TH986/727	Pebble Tweed	10	75%	76%	50+	0.18	16-4402	TH727/15

[P] = Premium color | ● = Lifestyle Collection | ● = Seta Cruda

SYMBOL



Solar heat protection



Solar light protection



Protection from U.V. rays



Ratio between the total solar energy transmitted into a room through a solar protection device/ window system and the incident solar energy

* An expanded explanation of the above can be found on page 62

NAME	47"	60"	60" Coated*	80"
Air Force Blue	T87/8-47			
Antique Beige	T88-47			
Antique Pink	T53-47			
Ash Gessato ●	T1330/505-47			
Beige	T52-47	T52-60	T52-60C	
Beige Tweed		T407/52-60		
Bisque Tweed	T873/2-47			
Bisquit Tweed	T986/106-47			
Black	T24-47	T24-60	T24-60C	T24-80
Bluette	T77-47			
Bossa Nova ●	T5407/73-47			
Brick [P]	T426-47	T426-60		
Brick Tweed	T407/84-47			
Bright Green ●	T5406/6-47			
Bright Orange	T55-47			
Brown	T18-47			
Burgundy [P]	T73-47	T73-60		T73-80
Buttercream	T93-47			
Camel	T58/15-47			
Candy Pink	T25/15-47			
Cappuccino	T102-47	T102-60		
Carbon	T107-47			
Carbon Fiber ●	T5406/107-47			
Carbon Gessato ●	T1330/512-47			
Carbon Tweed	T986/107-47			
Charcoal	T97-47	T97-60		
Chive	T7/14-47			
Chocolate	T81-47	T81-60		
Chutney	T84/14-47			
Clay Court	T98-47			
Cobalt	T10-47			
Coffee	T57-47			

NAME	47"	60"	60" Coated*	80"
Complexion	T26/15-47			
Coral Pink	T20-47			
Coriander ●	T5406/52-47			
Cream	T15/1-47	T15/1-60	T15/1-60C	
Crest Cement	T4015/91-47			
Deco Rose Tweed	T873/73-47			
Driftwood	T926-47	T926-60		
Driftwood Tweed	T407/926-47	T407/926-60		
Dune Tweed	T873/151-47			
Durmast	T782/14-47			
Eggplant	T97/84-47			
Forest Green	T5-47	T5-60	T5-60C	T5-80
Forest Tweed	T407/6-47	T407/6-60		
Glacier Tweed	T873/15-47			
Greige	T1304-47			
Grey		T94-60	T94-60C	
Grey Tweed	T407/94-47			
Harvest Pumpkin ●	T5406/73-47			
Hazelnut	T930-47			
Hazelnut Gessato ●	T1330/509-47			
Henna	T57/54-47			
Holland Tweed	T407/5-47			
Ice Grey ●	T5406/15-47			
Ice Tweed	T986/15-47			
Indigo	T92-47	T92-60	T92-60C	
Intense Blue		T414-60		
Irish Green ●	T5407/6-47			
Jungle	T97/8-47			
Latte	T15/52-47	T15/52-60		
Lavender	T74/15-47			
Lead	T94/15-47			
Lemon Cream	T15/12-47			

NAME	47"	60"	60" Coated*	80"
Lettuce Tweed	T873/78-47			
Light Lemon Tweed	T407/4-47			
Lime	T16-47			
Linen	T4215/15-47			
Maroon [P]		T415-60	T415-60C	
Merlot Gessato ●	T1330/513-47			
Metal	T727/71-47			
Mid Blue	T17/15-47			
Midnight Blue	T97/13-47			
Mist	T15/79-47	T15/79-60	T15/79-60C	
Mudslide ●	T5406/94-47			
Musk Tweed	T407/3-47			
Navy	T75-47	T75-60	T75-60C	
Noisette Tweed	T407/14-47			
Ochre	T54-47			
Olive	T7-47			
Orange	T72-47			
Orange Tweed	T407/9-47			
Oyster	T15/14-47	T15/14-60	T15/14-60C	
Pacific Blue	T416-47	T416-60	T416-60C	
Paris Red	T56-47			
Pearl	T151/929-47			
Pebble	T727/15-47			
Pebble Tweed	T986/727-47			
Pine Green	T8-47			
Pistachio	T1302-47			
Plum	T91-47			
Pool Green	T6-47			
Powder Blue	T21-47	T21-60	T21-60C	
Prussian Blue	T13-47			
Pumpkin Tweed	T407/8-47			
Red [P]	T11-47	T11-60	T11-60C	

NAME	47"	60"	60" Coated*	80"
Red Tweed [P]	T407/11-47	T407/11-60		
Royal Blue Tweed	T407/13-47	T407/13-60		
Rust	T84-47			
Sage Tweed	T407/16-47			
Sapphire	T87-47			
Seagrass ●	T5407/94-47			
Sequoia	T57/1-47			
Sesame ●	T5407/52-47			
Shoreline	T22-47	T22-60		
Sicily Orange	T19-47			
Silk Grey ●	T5407/15-47			
Silver	T79-47	T79-60		
Silver Tweed	T407/79-47	T407/79-60		
Sky Blue ●	T5406/17-47			
Skydiver ●	T5407/17-47			
Skyway Tweed	T873/17-47			
Snow	T15/93-47	T15/93-60	T15/93-60C	
Soccer Field	T62/15-47			
Spa	T71/15-47			
Sunflower [P]	T12-47	T12-60		
Sunshine	T684/12-47			
Tan	T14-47			
Toast	T101-47	T101-60		
Toffee	T106-47	T106-60		
Toffee Gessato ●	T1330/508-47			
Turbulence ●	T5407/107-47			
Vanilla	T929-47			
Wave	T782/87-47			
White	T15-47	T15-60	T15-60C	

Part #-47 = 47" | Part #-60 = 60" | Part #-60C = coated 60" | Part #-80 = 80" | [P] = Premium color | ● = Lifestyle Collection | ● = Seta Cruda

* Please note: The underside of the Tempotest Coated goods may appear darker when compared to the topside of the fabric depending on color. The coated side should be installed on the inside.

STRIPES



LIVE REBIRTH | HOLI FESTIVAL

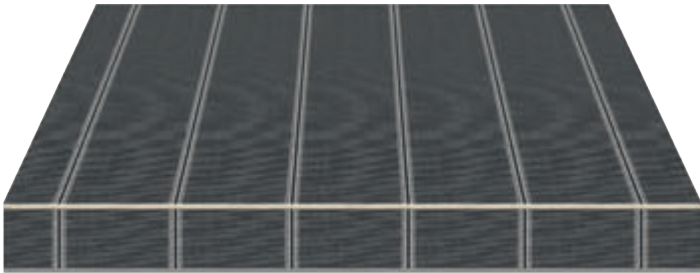
An explosion of fire was the origin of the stars, planets, and heavenly bodies that make up our universe. Thus, the red of fire and the brown of earth are forever bound by an unbreakable bond in which that destructive force became the muse that transformed our world forever.

TECHNICAL FEATURES	
Composition	Width (UNI EN 1773/98)
100% solution-dyed acrylic fiber	47"
Weight (UNI EN 5114/82)	Water Column (UNI EN 20811)
8.8 oz/yd² (+/- 5%)	≥ 38 cm

Tempotest fabric meets all requirements of paragraph 15.2 of UNI EN 13561:2009. The data corresponds to the material at the moment this technical data sheet was printed. Parà reserves the right to make changes to improve the product technologically. The updated technical data is available at tempotestusa.com.



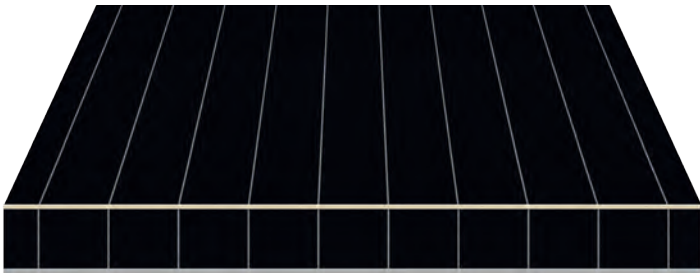
General warranty terms on tempotestusa.com



repeat 8"

T1081/24-47 Stockholm

w 47"



repeat 4.8"

T792/24-47 Sweden

w 47"



repeat 12"

T950/24-47 Tuxedo

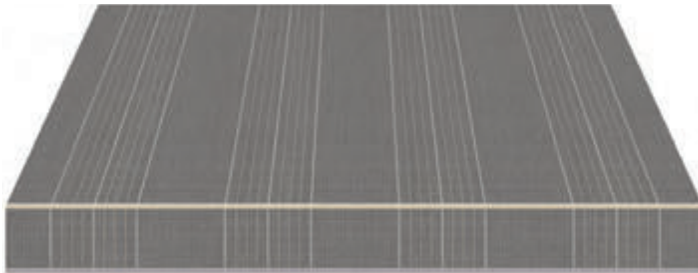
w 47"



repeat 8"

T790-47 Black/White

w 47"



repeat 12"

T5396/97-47 Rebel Charcoal

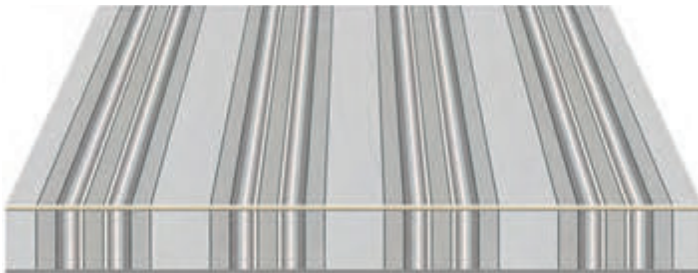
w 47"



repeat 8"

T68-47 Black/Grey

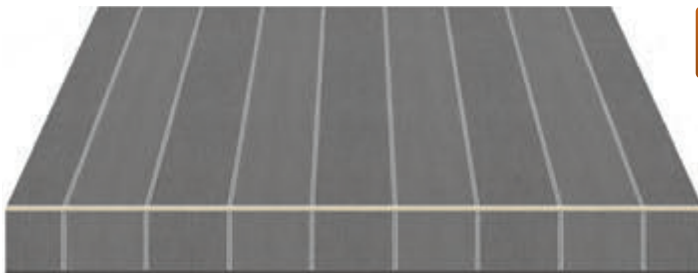
w 47"



repeat 12"

T633/79-47 Grey Rib

w 47"



repeat 12"

T5399/107-47 Winter Grey Harmony

w 47"



Coordinating Patterns:
T5406/107 - Carbon Fiber
T5407/107 - Turbulence



repeat 8"

T5374-47 Black Pearl

w 47"



Coordinating Patterns:

T986/107 - Carbon Tweed

T986/727 - Pebble Tweed



repeat 8"

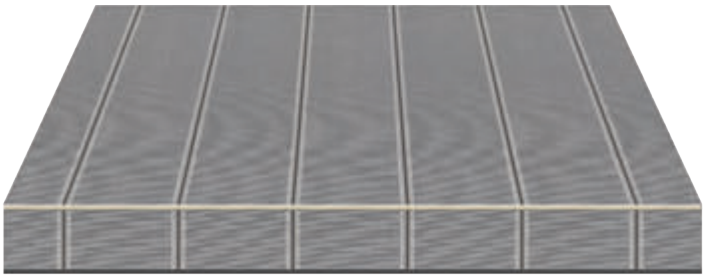
T5372-47 Pebble Tweed/White

w 47"



Coordinating Pattern:

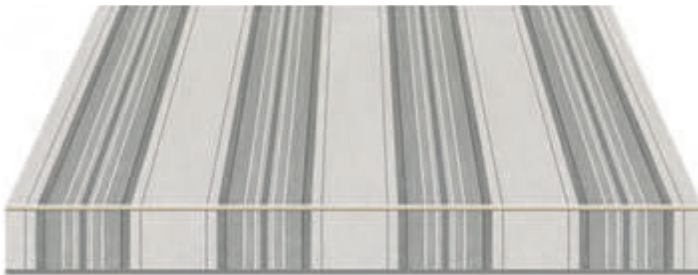
T986/727 - Pebble Tweed



repeat 8"

T1081/97-47 Bergen

w 47"



repeat 12"

T5347/79-47 Platinum Grey

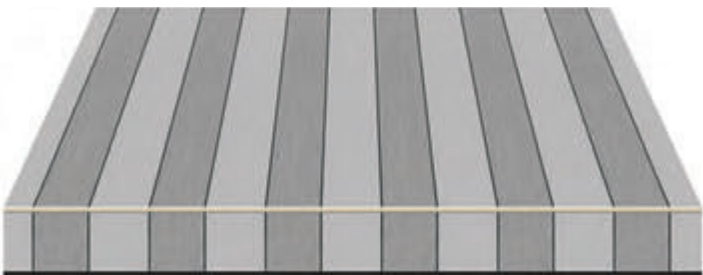
w 47"



Coordinating Patterns:

T986/15 - Ice Tweed

T986/727 - Pebble Tweed



repeat 8"

T5371/727-47 Phantom Grey

w 47"



Coordinating Pattern:

T727/15 - Pebble



repeat 12"

T5/179-47 Silver

w 47"



LIBERTY



repeat 12"

T5348/79-47 Steel Grey

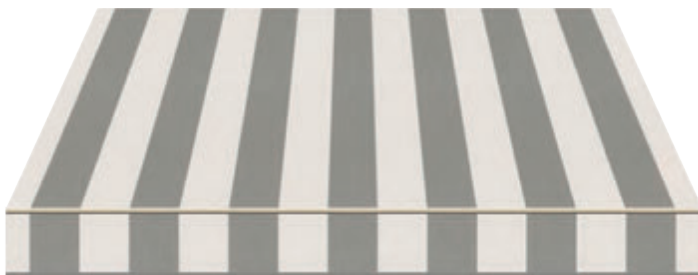
w 47"



Coordinating Patterns:

T986/15 - Ice Tweed

T727/15 - Pebble

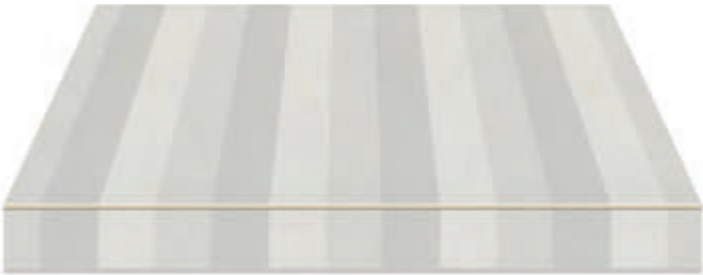


repeat 7"

T439-47 Dark Grey

w 47"





repeat 12"

T5361/79-47 Grey Frost

w 47"



repeat 8"

T242-47 Grey/White

w 47"



repeat 12"

T5399/15-47 Lunar Rock Harmony

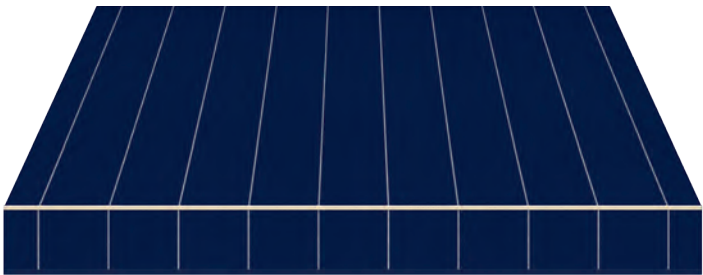
w 47"



Coordinating Patterns:

T5406/15 - Ice Grey

T5407/15 - Silk Grey



repeat 4.8"

T792/75-47 Finland

w 47"



repeat 8"

T1081/392-47 Oslo

w 47"



repeat 12"

T636/10-47 Navy/Grey Rib

w 47"



repeat 9"

T641/10-47 Navy/Beige

w 47"

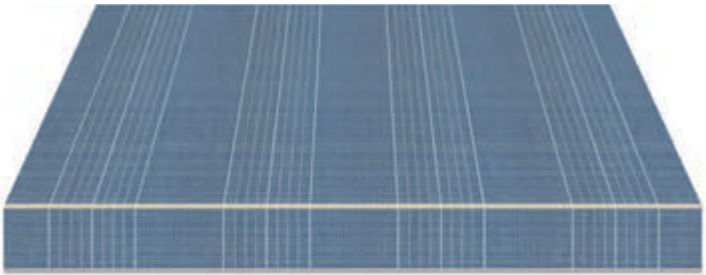


repeat 8"

T5173/75-47 Bomber Blue

w 47"





repeat 12"

T5396/87-47 Rebel Sapphire

w 47"



repeat 8"

T5398/107-47 Carbon Blue Blend

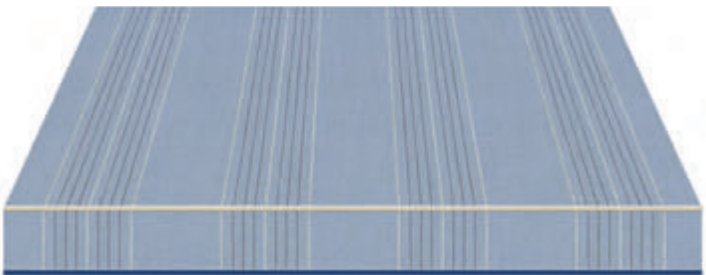
w 47"



repeat 12"

T5167/2-47 Chambray

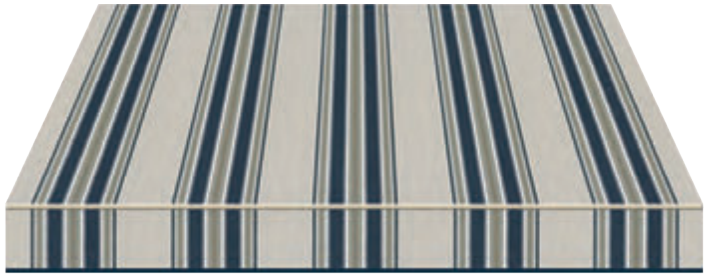
w 47"



repeat 12"

T5396/17-47 Rebel Blue

w 47"



repeat 9"

T951/92-47 Denim/Almond

w 47"



repeat 12"

T5355/75-47 Navy Dusk

w 47"



repeat 8"

T5398/17-47 Cloudy Sky Blend

w 47"



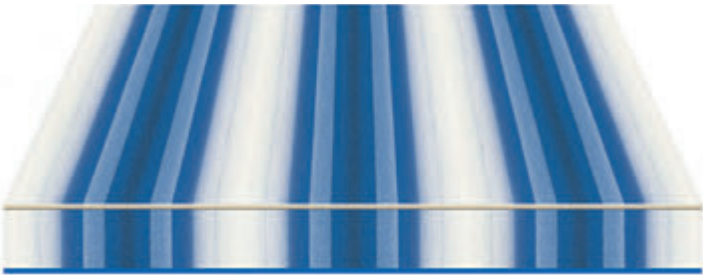
repeat 8"

T34-47 Navy Frost/White

w 47"



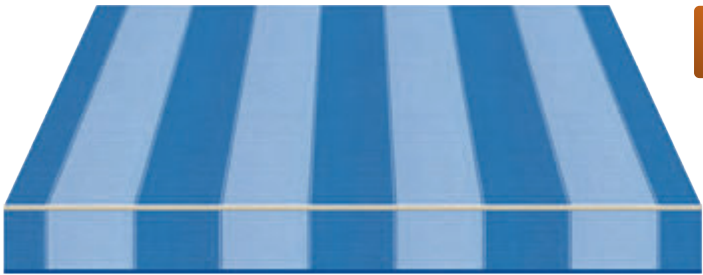
Coordinating Pattern:
T873/17 - Skyway Tweed



repeat 16"

T5001/13-47 Royal/White

w 47"



repeat 12"

T5399/17-47 Blue Ice Harmony

w 47"



Coordinating Patterns:

T5406/17 - Sky Blue

T5407/17 - Skydiver



repeat 8"

T116/15-47 Blue/White

w 47"



repeat 8"

T378-47 Aqua/White

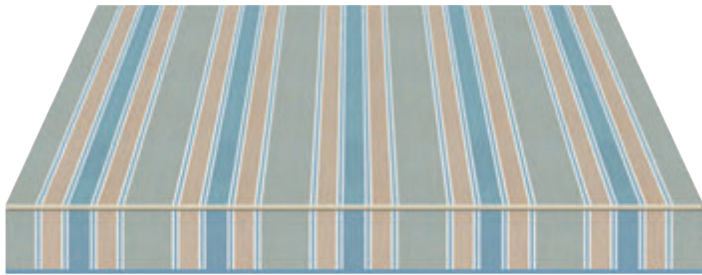
w 47"



repeat 8"

T31-47 Light Blue/White

w 47"



repeat 9"

T948/21-47 Winter Sky

w 47"



repeat 12"

T967/926-47 Greco Grey

w 47"



repeat 16"

T5370-47 Morel

w 47"





repeat 12"

T5349/106-47 Brown Cream

w 47"



repeat 12"

T5369-47 Charcoal Brown

w 47"



repeat 12"

T5349/930-47 Crème Latte

w 47"



repeat 8"

T969-47 Pearl Grey

w 47"



repeat 12"

T945/97-47 Café au Lait

w 47"



repeat 12"

T5396/930-47 Rebel Hazelnut

w 47"



repeat 12"

T5399/52-47 Mocha Cream Harmony

w 47"



repeat 8"

T949/91-47 Chocolate Almond

w 47"



Coordinating Patterns:
T5406/52 - Coriander
T5407/52 - Sesame



repeat 7"

T158-47 Chocolate Brown/Natural

w 47"



repeat 8"

T5398/930-47 Desert Dune Blend

w 47"



Coordinating Pattern:
T873/151 - Dune Tweed



repeat 12"

T636/14-47 Maple Sugar

w 47"



repeat 16"

T5011/57-47 Brown Natural

w 47"



repeat 12"

T947/14-47 Bamboo Sienna

w 47"



repeat 16"

T5000/57-47 Cocoa Stripe

w 47"



repeat 9"

T639/99-47 Beige/Brown Slub

w 47"



repeat 12"

T5348/58-47 Lemon Bisque

w 47"





repeat 9"

T739/701-47 Key Lime

w 47"



repeat 8"

T1120-47 Tan Slub

w 47"



repeat 16"

T5011/7-47 Forest Natural

w 47"



repeat 8"

T5371/106-47 Champagne Brown

w 47"



Coordinating Pattern:
T106 - Toffee



repeat 12"

T634/97-47 Forest/Beige Slub

w 47"



repeat 16"

T5000/7-47 Forest/Beige

w 47"



repeat 12"

T17/105-47 Emerald/Beige

w 47"



LIBERTY

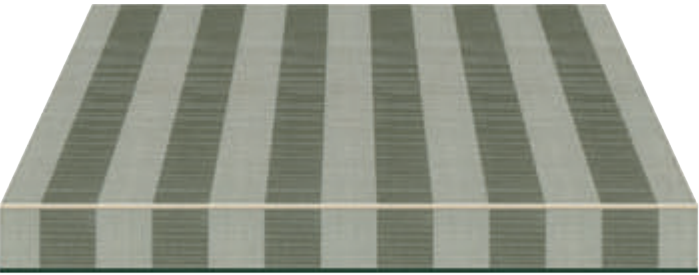


repeat 12"

T636/5-47 Forest/Beige/Cream

w 47"





repeat 8"

T5398/78-47 Fresh Meadow Blend

w 47"



Coordinating Pattern:
T873/78 - Lettuce Tweed



repeat 12"

T5347/62-47 Meadow White

w 47"



Coordinating Pattern:
T727/15 - Pebble



repeat 12"

T931-47 Emerald Cream

w 47"



repeat 8"

T1081/305-47 Lund

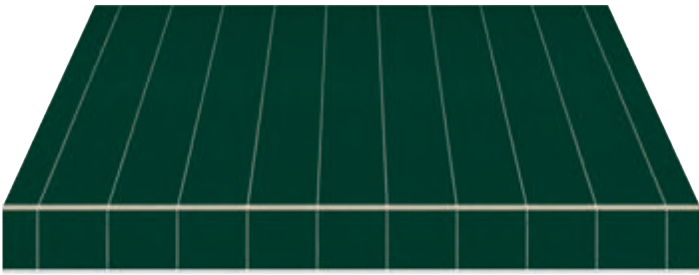
w 47"



repeat 8"

T33-47 Forest Green/White

w 47"



repeat 4.8"

T792/5-47 Denmark

w 47"



repeat 12"

T5396/78-47 Rebel Green

w 47"

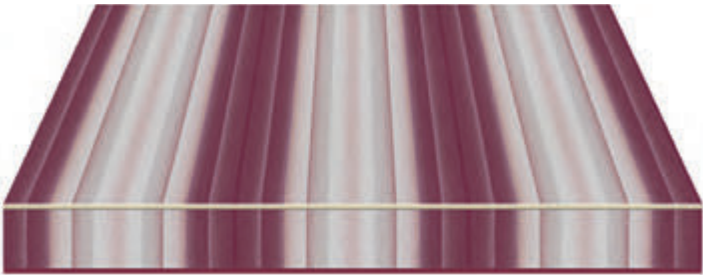


repeat 16"

T638/5-47 Forest Rib

w 47"





repeat 16"

T5001/73-47 Burgundy/Grey

w 47"



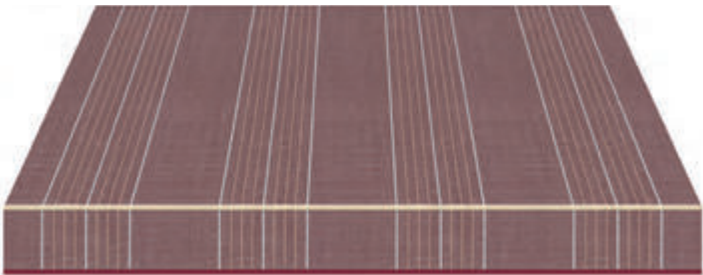
repeat 8"

T5398/73-47 Bordeaux Ice Blend

w 47"



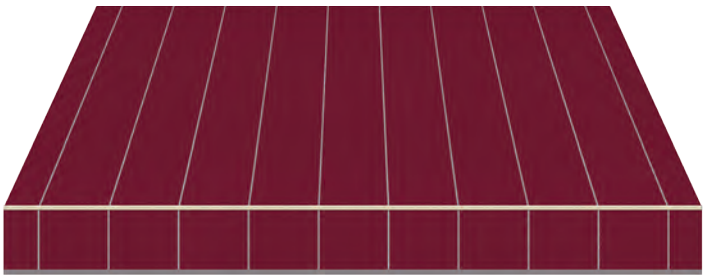
Coordinating Pattern:
T873/73 - Deco Rose Tweed



repeat 12"

T5396/73-47 Rebel Burgundy

w 47"



repeat 4.8"

T792/73-47 Norway

w 47"



repeat 16"

T1150-47 Rust/Green/Multi

w 47"



repeat 16"

T5011/11-47 Burgundy/Natural

w 47"



Coordinating Pattern:
T4215/15 - Linen



repeat 12"

T932-47 Maroon/Cream

w 47"



repeat 16"

T5001/11-47 Blush/Ivory

w 47"

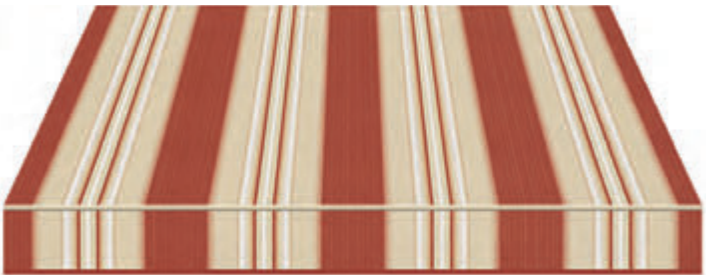




repeat 12"

T966/426-47 Roasted Peppers

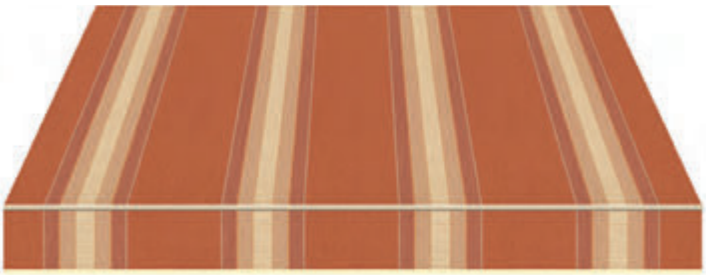
w 47"



repeat 12"

T636/84-47 Rust/Cream

w 47"



repeat 12"

T5349/426-47 Cinnabar

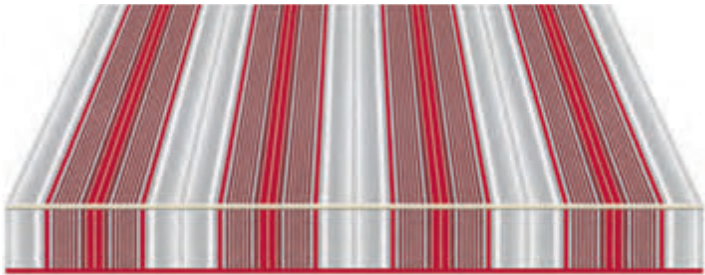
w 47"



repeat 12"

T1101-47 Harvest

w 47"



repeat 12"

T5167/11-47 Scarlet/Grey

w 47"



repeat 8"

T35-47 Red/White

w 47"



repeat 9"

T770/55-47 Bright Orange/Yellow

w 47"

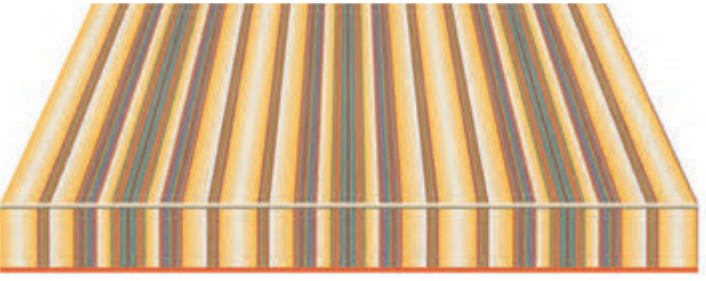


repeat 8"

T37-47 Yellow/White

w 47"









repeat 16"





T1243-47 Yellow/Multi


w 47"



TECHNICAL FEATURES

COLOR #	NAME	SUBFAMILY	PAGE				
T1081/24-47	Stockholm	Grey Fantasy	24	99	99	50+	0.03
T1081/305-47	Lund	Green Fantasy	41	99	99	50+	0.02
T1081/392-47	Oslo	Blue Fantasy	29	99	99	50+	0.08
T1081/97-47	Bergen	Grey Fantasy	26	95	97	50+	0.09
T1101-47	Harvest	Brown Fantasy	44	89	92	50+	0.11
T1120-47	Tan Slub	Brown Fantasy	38	88	89	50+	0.12
T1150-47	Rust/Green/Multi	Green Fantasy	43	90	94	50+	0.12
T116/15-47	Blue/White	Block Stripe	32	84	86	15	0.14
T1243-47	Yellow/Multi	Yellow Fantasy	46	81	84	30	0.15
T158-47	Chocolate Brown/Natural	Brown Fantasy	36	92	93	50+	0.11
T17/105-47	Emerald/Beige	Liberty	39	84	86	50+	0.14
T242-47	Grey/White	Block Stripe	28	82	84	15	0.14
T31-47	Light Blue/White	Block Stripe	33	78	84	15	0.16
T33-47	Forest Green/White	Block Stripe	40	86	86	15	0.14
T34-47	Navy Frost/White	Block Stripe	31	86	86	15	0.14
T35-47	Red/White	Block Stripe	45	78	86	15	0.17
T37-47	Yellow/White	Block Stripe	45	77	80	15	0.17
T378-47	Aqua/White	Block Stripe	32	78	81	15	0.16
T439-47	Dark Grey/White	Block Stripe	27	85	85	15	0.14
T5/179-47	Silver	Liberty	27	79	82	40	0.15
T5000/57-47	Cocoa	Brown Fantasy	37	89	90	50+	0.12
T5000/7-47	Forest/Beige	Green Fantasy	39	89	91	50+	0.12
T5001/11-47	Blush/Ivory	Red Fantasy	43	83	87	40	0.14
T5001/13-47	Royal/White	Blue Fantasy	32	84	86	30	0.14
T5001/73-47	Burgundy/Grey	Red Fantasy	42	91	92	50+	0.11
T5011/11-47	Burgundy/Natural	Red Fantasy	43	87	91	50+	0.13
T5011/57-47	Brown Natural	Brown Fantasy	36	90	91	40	0.11
T5011/7-47	Forest Natural	Green Fantasy	38	90	91	50+	0.12

COLOR #	NAME	SUBFAMILY	PAGE				
T5167/11-47	Scarlet/Grey	Red Fantasy	45	86	91	40	0.13
T5167/2-47	Chambray	Blue Fantasy	30	88	90	45	0.12
T5173/75-47	Bomber Blue	Blue Fantasy	29	91	92	50+	0.11
T5347/62-47	Meadow White	Green Fantasy	41	84	84	25	0.14
T5347/79-47	Platinum Grey	Grey Fantasy	27	75	75	25	0.18
T5348/58-47	Lemon Bisque	Brown Fantasy	37	88	90	50+	0.12
T5348/79-47	Steel Grey	Grey Fantasy	26	76	76	25	0.18
T5349/106-47	Brown Cream	Brown Fantasy	34	86	90	25	0.13
T5349/426-47	Cinnabar	Brown Fantasy	44	91	93	50+	0.11
T5349/930-47	Crème Latte	Brown Fantasy	34	94	95	50+	0.10
T5355/75-47	Navy Dusk	Blue Fantasy	31	84	85	40	0.14
T5361/79-47	Grey Frost	Grey Fantasy	28	82	84	40	0.14
T5369-47	Charcoal Brown	Block Stripe	34	92	91	50+	0.11
T5370-47	Morel	Block Stripe	33	89	91	50+	0.12
T5371/106-47	Champagne Brown	Brown Fantasy	38	92	96	50+	0.10
T5371/727-47	Phantom Grey	Grey Fantasy	26	84	86	50+	0.14
T5372-47	Pebble Tweed/White	Block Stripe	27	74	74	15	0.18
T5374-47	Black Pearl	Block Stripe	26	84	84	50+	0.15
T5396/17-47	Rebel Blue	Blue Fantasy	30	79	84	50+	0.16
T5396/73-47	Rebel Burgundy	Red Fantasy	42	86	87	50+	0.13
T5396/78-47	Rebel Green	Green Fantasy	40	87	87	50+	0.13
T5396/87-47	Rebel Sapphire	Blue Fantasy	30	86	87	50+	0.13
T5396/930-47	Rebel Hazelnut	Brown Fantasy	35	96	98	50+	0.09
T5396/97-47	Rebel Charcoal	Grey Fantasy	25	87	87	50+	0.13
T5398/107-47	Carbon Blue Blend	Block Stripe	30	91	92	50+	0.11
T5398/17-47	Cloudy Sky Blend	Block Stripe	31	77	82	45	0.17
T5398/73-47	Bordeaux Ice Blend	Block Stripe	42	85	85	50+	0.14
T5398/78-47	Fresh Meadow Blend	Block Stripe	40	82	83	45	0.15
T5398/930-47	Desert Dune Blend	Block Stripe	36	89	90	50+	0.12
T5399/107-47	Winter Grey Harmony	LifeStyle	25	92	92	50+	0.11
T5399/15-47	Lunar Rock Harmony	LifeStyle	28	78	79	35	0.16
T5399/17-47	Blue Ice Harmony	LifeStyle	32	83	90	50	0.15
T5399/52-47	Mocha Cream Harmony	LifeStyle	35	93	94	50+	0.11
T633/79-47	Grey Rib	Grey Fantasy	25	85	86	40	0.13
T634/97-47	Forest/Beige Slub	Green Fantasy	39	84	85	30	0.14
T636/10-47	Navy/Grey Rib	Blue Fantasy	29	90	90	40	0.12
T636/14-47	Maple Sugar	Brown Fantasy	36	94	95	50	0.10
T636/5-47	Forest/Beige/Cream	Green Fantasy	39	88	89	50	0.13
T636/84-47	Rust/Cream	Brown Fantasy	44	87	89	45	0.12
T638/5-47	Forest Rib	Green Fantasy	41	93	94	50	0.11
T639/99-47	Beige/Brown Slub	Brown Fantasy	37	80	81	40	0.16
T641/10-47	Navy/Beige	Blue Fantasy	29	88	88	35	0.13
T68-47	Black/Grey	Block Stripe	25	87	87	50+	0.14
T739/701-47	Key Lime	Green Fantasy	38	89	91	45	0.12

COLOR #	NAME	SUBFAMILY	PAGE				
T770/55-47	Bright Orange/Yellow	Red Fantasy	45	80	86	50+	0.16
T790-47	Black/White	Block Stripe	24	86	86	15	0.14
T792/24-47	Sweden	Grey Fantasy	24	99	99	50+	0.02
T792/5-47	Denmark	Green Fantasy	41	99	99	50+	0.02
T792/73-47	Norway	Red Fantasy	42	99	99	50+	0.08
T792/75-47	Finland	Blue Fantasy	28	99	99	50+	0.02
T931-47	Emerald/Cream	Block Stripe	40	88	88	50+	0.13
T932-47	Maroon/Cream	Block Stripe	43	86	88	50+	0.13
T945/97-47	Café Au Lait	Brown Fantasy	35	91	92	50+	0.11
T947/14-47	Bamboo Sienna	Brown Fantasy	37	80	81	30	0.16
T948/21-47	Winter Sky	Blue Fantasy	33	84	91	50+	0.14
T949/91-47	Chocolate Almond	Brown Fantasy	35	96	97	50+	0.09
T950/24-47	Tuxedo	Grey Fantasy	24	95	96	50+	0.09
T951/92-47	Denim/Almond	Blue Fantasy	31	88	89	50+	0.12
T966/426-47	Roasted Peppers	Brown Fantasy	44	96	99	50+	0.09
T967/926-47	Greco Grey	Grey Fantasy	33	96	93	50+	0.09
T969-47	Pearl Grey	Block Stripe	34	94	93	50+	0.10

SYMBOL



Solar heat protection



Solar light protection



Protection
from U.V. rays



Ratio between the total solar energy transmitted into a room through a solar protection device/window system and the incident solar energy

* An expanded explanation of the above can be found on page 62



LIFESTYLE COLLECTION • A superior standard of research

In-depth research into colors and styles has prompted us to create truly exquisite fabrics. The sophisticated final effect is provided by even more beautiful hues, bursting with vitality and enhanced by elaborate textures.



SETA CRUDA • The return to the natural beauty of imperfection

A combination of textures which, thanks to a special process, enhance the design of these fabrics with details that are naturally uneven.



STARLIGHT® FR

Flame Retardant



STARLIGHT FR
T6015/300-60 - Snow



STARLIGHT FR
T6015/301-60 - Buttercream



STARLIGHT FR
T6090/300-60 - Toast



STARLIGHT FR
T6930/300-60 - Chocolate



STARLIGHT FR
T6929/300-60 - Cappuccino



STARLIGHT FR
T6079/300-60 - Grey



STARLIGHT FR
T6097/300-60 - Charcoal



STARLIGHT FR
T6024/300-60 - Black



STARLIGHT FR
T6012/300-60 - Yellow



STARLIGHT FR
T6008/300-60 - Forest Green



STARLIGHT FR
T6011/300-60 - Clay Court



STARLIGHT FR
T6073/300-60 - Burgundy



Flame Retardant



STARLIGHT FR
T6092/300-60 - Indigo



STARLIGHT FR
T6416/300-60 - Pacific



Tempotest STARLIGHT® FR is woven using our innovative 100% solution-dyed PET fiber with inherent Flame Retardant properties. This high-tenacity fabric has excellent color fastness and is resistant to UV degradation. Finished with our Teflon Extreme treatment, Tempotest Starlight FR is water and oil repellent, anti-mold, and stain resistant. Tempotest Starlight FR is perfect for use in public areas that require flame retardant fabrics such as hotels, bars, restaurants, and various other public buildings. The fire resistant properties make it suitable for use in closed and insulated structures where stoves, heaters, and other sources of heating are used. Tempotest Starlight FR is extremely dimensionally stable and is well suited for large structures. The fabric meets or exceeds the maximum UV protection value for fabrics (UPF 50+).

TECHNICAL FEATURES

Composition	100% solution-dyed PET FR outdoor
Width	60"
Thickness	0.017"
Weight	8.8 oz/yd ² (+/- 5%)
Water column	≥ 35 cm (UNI EN 20811)
Spray Test	Grade 4 (UNI EN 24920)
Finishing	Teflon™ treatment, soil and mold resistant, water repellent
Lightfastness	4/5 - 5 degree grey scale (UNI EN ISO 105-B04, 1000 hours)
Breaking load	Warp: 2300 N - elongation 40% Weft: 1100 N - elongation 40% (UNI EN 13934-1)
Fire resistance	Class 1 (UNI EN 9177) B1 (DIN 4102) NFPA 701-10 MVSS 302 TITLE 19-SECTION 1237 CPAI 84
Maintenance	Brush with water and mild soap. Rinse thoroughly. Dry before rewinding.

WARRANTY
5
YEARS



Flame retardant



Recyclable



Water-repellent



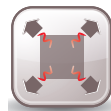
Weldable



UV stability



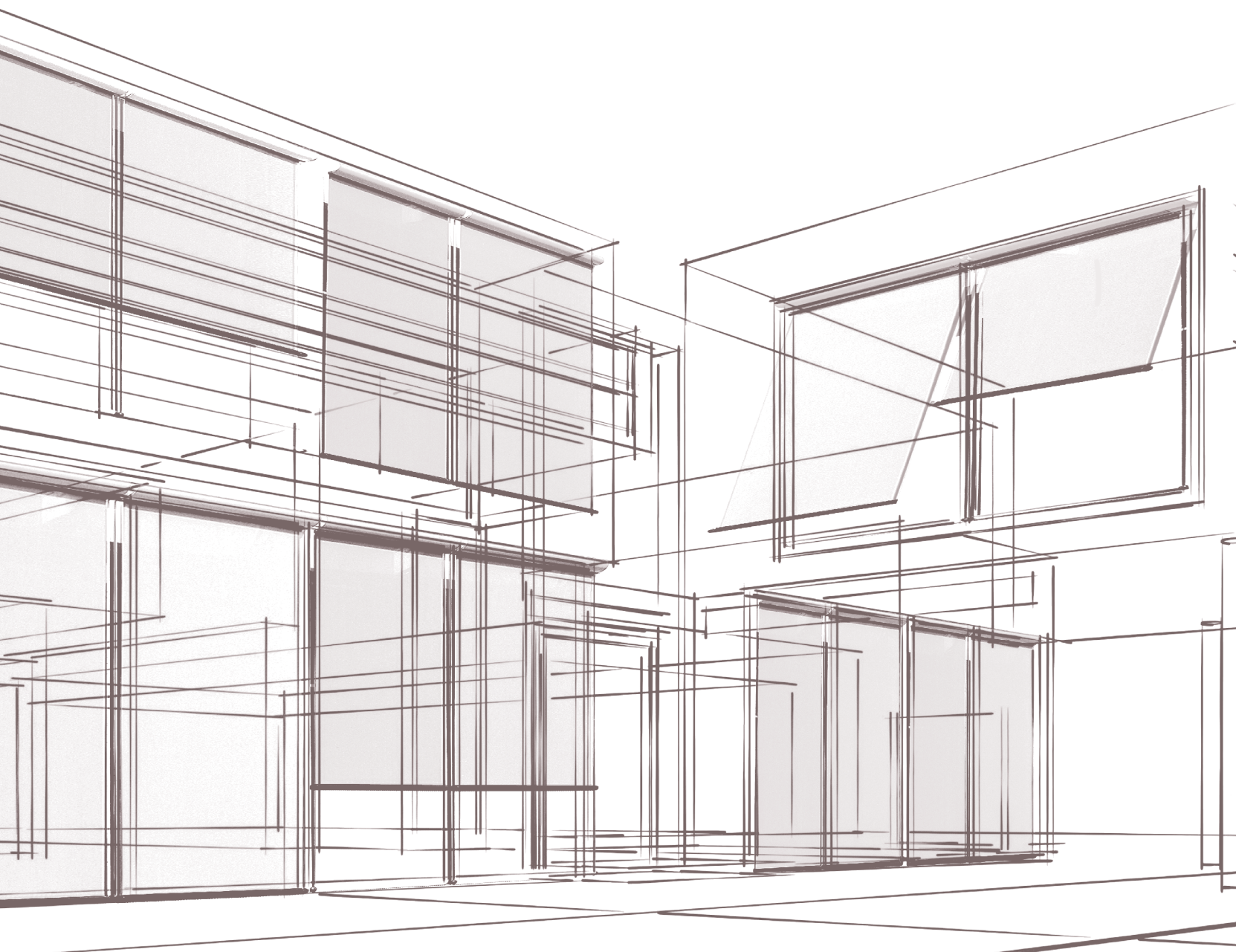
Duration of the color



Dimensional
stability



Easy to clean



STARSCREEN®

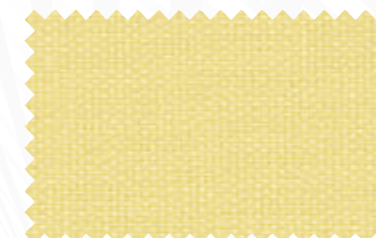
STARSCREEN®



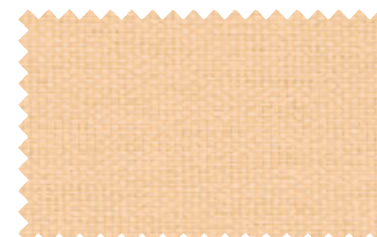
White
T8015/400-128



Creme
T8015/401-128



Mellow Yellow
T8023/400-128



Apricot Ice
T8028/400-128



Wood Ash
T8090/400-128



Vanilla
T8929/400-128



Silver
T8079/400-128



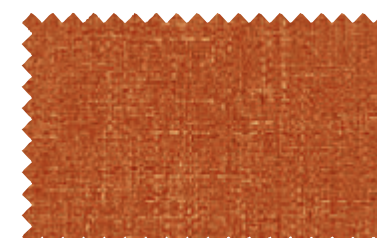
Denim Blue
T8592/492-128



Denim Grey
T8293/493-128



Burgundy
T8073/400-128

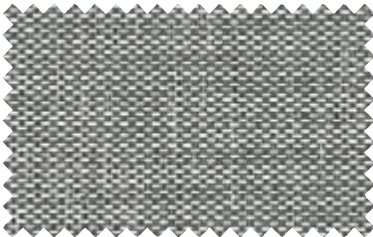


Jaffa Orange
T8211/411-128

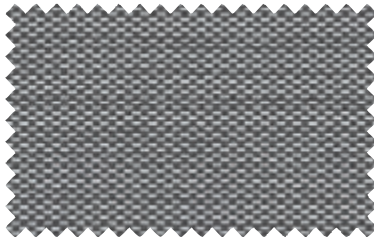


Bright Lime
T8027/400-128





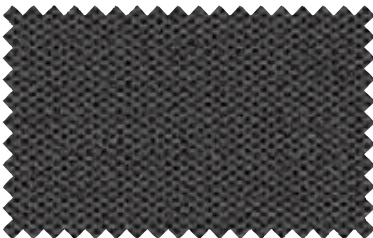
Lunar Rock
T8197/415-128



Cloud Burst
T8097/415-128



Smoked Pearl
T8971/497-128



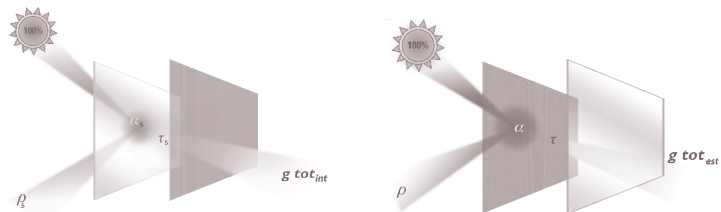
Charcoal
T8097/400-128



Black
T8024/400-128



CODE	PANTONE	NCS	RAL
T8015/400-128	11-0103 Egret	S 0502 - G50Y	9003
T8015/401-128	12-0104 White Asparagus	S 2010 - Y10	1015
T8023/400-128	12-0720 Mellow Yellow	S 0520 - Y	1018
T8024/400-128	19-4005 Stretch Limo	S 9000 - N	9011
T8027/400-128	14-0244 Bright Lime	S 2060 - G70Y	6017
T8028/400-128	13-1020 Apricot Ice	S 0520 - Y30R	1034
T8073/400-128	19-2024 Rhododendron	S 6030 - R10B	4004
T8079/400-128	16-3802 Ash	S 3500 - N	7040
T8090/400-128	14-1108 Wood Ash	S 2020 - Y10R	1001
T8097/400-128	12-0720 Castelrock	S 7502 - B	7015
T8097/415-128	17-1502 TPX Cloudburst	S 5500 - N	7042
T8197/415-128	14-4201 TPX Lunar Rock	S 2000 - N	9006
T8211/411-128	16-1454 TPX Jaffa Orange	S 1080 - Y60R	2010
T8293/493-128	19-0809 TPX Chocolate Chip	S 6010 - Y30R	7006
T8592/492-128	18-3910 TPX Folkstone Gray	S 6010 - R70B	5000
T8929/400-128	14-6305 Pelican	S 3005 - Y20R	7044
T8971/497-128	18-0000 TPX Smoked Pearl	S 7000 - N	7043



HEAT SHIELD & ENHANCEMENT OF LIGHT

Placed outside or inside the glass, Tempotest Starscreen absorbs and rejects up to 97% of the heat caused by solar irradiation while preserving the passage of light. Its particular thread gives a pleasant diffusion of light.

TEMPOTEST STARSCREEN® ECO-FRIENDLY



PVC FREE
FORMALDEHYDE FREE
HALOGEN FREE

IN COMPLIANCE WITH REACH REGULATION



Tempotest STARSCREEN® is an innovative fabric, unique in its type, because of its technical qualities, specifically it is not PVC coated. It has a nice textile hand that, together with its dimensional stability, make it perfect in appearance and particularly suitable for the architectural design world. Thanks to its solution-dyed PET fiber, Tempotest Starscreen can be used both indoor and outdoor without losing its original color. This helps to preserve the beauty of the building design. The carefully calculated transparency removes solar glare without restricting light into the environment. This leads to a significant reduction in the use of air conditioning and artificial light, and therefore is important to energy conservation. Ensuring transparency from inside while shading the view from outside, this fabric is suitable for home and office projects where privacy is essential.

The Teflon Extreme treatment makes Tempotest Starscreen repellent to water, stains, and dirt, so is easy to maintain and clean.

Tempotest Starscreen is classified flame retardant in passing title 19 - Section 1237, NFPA 701-2010, MVSS 302. Starscreen is formaldehyde free and is recyclable, in accordance with REACH regulation.

TECHNICAL FEATURES

Composition	100% solution-dyed PET FR outdoor
Width	128"
Thickness	0.02"
Weight	6.49 oz/yd ² (+/- 5%)
Finishing	Teflon™ soil and mold resistant, oil and water-repellent
Lightfastness	7/8-8 degree blue scale (EN ISO B02) ≥ 4 degree grey scale after 1000 hours of exposure (EN ISO B04)
Breaking load	Warp: 1200 N - elongation 32.5% Weft: 920 N - elongation 37.5% (UNI EN 13934-1)
Tear Strength	Warp: 82 Weft: 54
Fire resistance	Class 1 (UNI 9177), B1 (DIN 4102), M1, NFPA 701-2010 test 1 small scale, CSFM T19 spec.
Maintenance	Clean with a damp cloth
Openess Factor	3.5%

WARRANTY
3
YEARS



PVC free



Flame retardant



Recyclable



Water-repellent



Weldable



UV stability



Duration
of the colors



Dimensional
stability



Easy to clean



Glare control



Low thickness

AWNING BINDING TAPE



TECHNICAL FEATURES

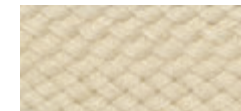
Composition	100% solution-dyed acrylic
Width	7/8"
Roll Length	164 yards (150 m)

Tempotest Awning Binding Tape is 100% acrylic and is color coordinated with the Tempotest line of awning and marine fabric. It has a fine, soft hand and is available in a wide range of colors. Tempotest Awning Bindings are suitable for use with any awning and marine fabric.

This binding has the same solution-dyed construction as the Tempotest fabric, providing excellent exposure resistance to sun and atmospheric contents, as well as the actions of molds, micro-organisms, and salt.



White
TB15-78



Ivory
TB151-78



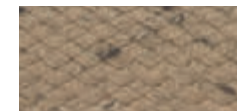
Vanilla
TB929-78



Beige
TB52-78



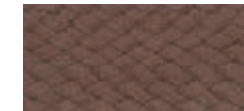
Tan
TB14-78



Tan/Chocolate
TB1481-78



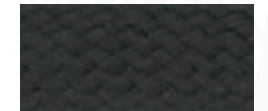
Driftwood
TB926-78



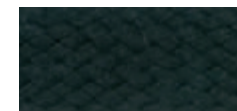
Coffee
TB57-78



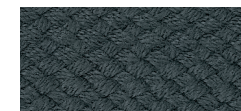
Hazelnut
TB930-78



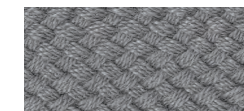
Chocolate
TB81-78



Black
TB24-78



Charcoal
TB97-78



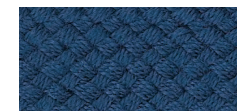
Grey
TB94-78



Silver
TB79-78



Navy
TB75-78



Sapphire
TB87-78



Cobalt
TB10-78



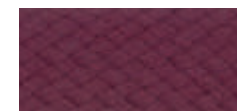
Prussian Blue
TB13-78



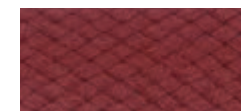
Forest
TB5-78



Olive
TB7-78



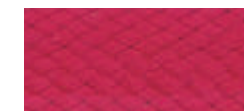
Burgundy
TB73-78



Rust
TB84-78



Clay Court
TB98-78



Red
TB11-78



Sunflower
TB12-78



Copper
TB58-78

INFORMATION

QUALITY, PERFORMANCE, & CHARACTERISTICS OF ACRYLIC FABRICS USED FOR SUN PROTECTION

A retractable awning is installed to protect people and their environments from solar radiation. Through the regulation of heat and light, they are meant to increase the thermal comfort and visual protection of the area they are covering. Retractable awnings and solar shading systems can also be installed for reason of privacy, decoration, and/or energy savings. Tempotest fabrics must meet all technical and stylistic requirements, and are therefore subjected to strict lab tests both during and after the production process. These tests ensure our fabrics meet the high-performance demands you can expect from Tempotest.

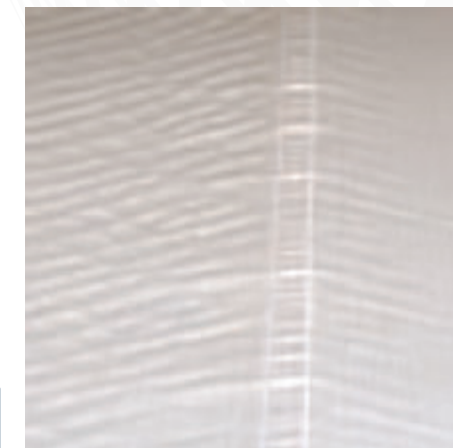
Weight, breaking load, tear strength, dimensional stability, water column, water repellency, color fastness, solar energy performance, and other characteristics are measured with sophisticated technological instruments and must comply with specific international standards. Due to the nature of the fiber, acrylic fabrics can show small imperfections once installed onto the hardware and should not be considered defects.

The following sections illustrate some irregularities that woven fabrics could exhibit. While these are part of the technical characteristics of any solution-dyed acrylic fabric, it is possible to minimize the intensity of these phenomena with proper installation and regular maintenance. None of the aesthetic imperfections, that may occur, will compromise the performance of the fabric or make it less suitable for the functions as described above.



UNDULATIONS NEAR THE SEAMS

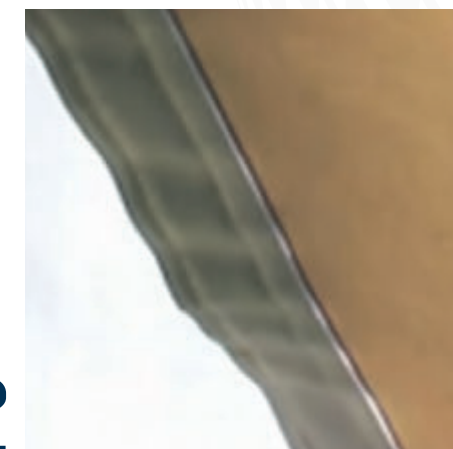
The continuous action of winding and unwinding of the cloth may cause an over-tensioning in the area of the seams where the fabrics are overlapped and therefore thicker. This tensioning can cause folds in the area near the seam. These marks may also be referred to as embossing. This phenomenon can be accentuated by the humidity. The visibility can differ depending on the color and different light conditions. The undulations become more likely with the increase of the awning dimensions and/or the increase of the tension applied to the fabric.



1

UNDULATIONS ALONG THE EDGES OF THE COVER

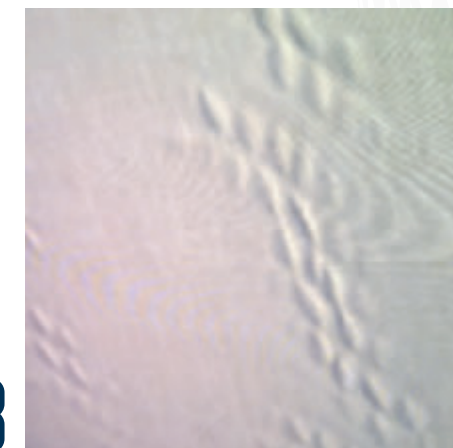
Retractable awning fabric is kept in tension by the lateral arms extending the front bar away from the roller tube. Consequently, it is possible that the most tension is located in the center of the cover. The lateral edges, which are not subjected to sufficient tension to keep them taut, can fold under and/or exhibit some rippling. This phenomenon can also occur when the awning is used as protection against rain if the pitch of the awning does not allow for proper runoff. One or more pockets of water can form and create uneven tension. Therefore, it is not advisable to expose awnings with insufficient pitch to rain conditions.



2

FABRIC FOLDS OR DIMPLING

It is possible that during the winding and unwinding, the canvas can exhibit some mild lateral shifting. This movement can cause some minor folds or dimpling which can take the shape of a honeycomb. The greater the number of fabric layers wrapped onto a roller tube, the greater the possibility of lateral movement, which can lead to these undulations. This phenomenon can be accentuated if the cloth is wound while still wet. Therefore, it is advisable to let the cloth dry before rolling it up. This will also help prevent the possibility of mold growth.



3

INFORMATION

FOLDS OF COMPRESSION

These folds are formed during handling of the material and can occur in both the packaging phase and/or while mounting the cover onto the hardware itself. Sometimes folding the cover is unavoidable. In light colors, this phenomenon can be amplified and show a darker color on the surface side of the fold, which can look like dirt. Continual movement of the cloth can accentuate this imperfection in the long-term. Many installers have perfected the art of transport and assembly and take special care to minimize the appearance of these compression marks.

4



CRAZING LINES & THE 'WRITING EFFECT'

The finishes and coatings used to guarantee the performance of both water-resistant and waterproof outdoor fabrics can show markings caused by handling. This slight discoloration is often referred to as crazing, or the "writing effect", and is typically more visible on darker tones. These markings typically dissipate in time after extended exposure to the elements.

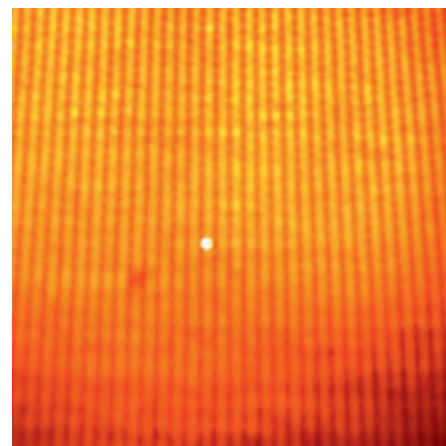
5



MICRO-HOLES IN FABRIC

Acrylic fabrics are treated with a particular finishing process that stiffens the hand of the fabric which allows the cover to remain tight when used on a traditional awning. When used on a retractable awning, this characteristic can give rise to the formulation of micro-holes in correspondence with the folds of the fabric that are formed due to the continuous mechanical action of hardware.

6



MAINTENANCE

SUGGESTED FABRIC CARE & MAINTENANCE

Air pollution, smog, and/or other kinds of particles may be deposited on Tempotest fabrics. Oftentimes, dirt of this nature can be removed by simply brushing the surface of the fabric with a soft brush and then spraying it with clean warm water (not to exceed 100°F) and allowing it to air dry.

Periodically, the fabric should undergo a deeper cleaning. Avoid the use of detergents, use only mild soaps like Woolite® or Ivory® soap. Gently brush the surface of the fabric with a solution of clean warm water and non-detergent soap (2 ounces of mild soap in a gallon of water not hotter than 100°F) and allow to sit for 15 minutes. Then, rinse thoroughly to completely remove the soap and allow the fabric to fully dry in the open-air.

Some locations may lead to tougher stains. Tree resin or sap may be transferred to the fabric or mold can grow in areas where water pockets are present. In these situations, it is recommended to follow the procedure above and add bleach to the solution, diluted at a ratio of 1:16 per gallon of clean warm water (no hotter than 100 F).

Do not iron Tempotest fabrics with steam and do not dry using electrical devices. During the winter season, it is advisable to store the fabric in a dry and well-ventilated environment.



A GREEN STORY

COGENERATION PLANT

In order to further protect the environment both locally and globally, Parà has invested in a modern cogeneration plant. The purpose of this plant is to generate both electric and thermal energy using three 8-cycle endothermic engines powered by methane gas. Cogeneration is used to recover the hot water and/or steam by-product from the manufacturing process. This process leads to considerable energy savings when compared to the conventional separate production of electric and thermal energy via electric power stations and thermal engines.

WATER RECYCLING

Respecting and protecting the environment have always been cornerstones of company operations at Parà. We are very proud of our cutting-edge waste water treatment plant located in Pontirolo Nuovo, Province of Bergamo. This single-stage biological plant also includes a large settling pond that works in conjunction with the various stages of purification, including the treatment of nitrogen-based compounds and the drainage of sludge. The plant treats approximately 530,000 gallons of water per day with a 94% yield.

215,000 SF OF SOLAR PANELS ON THE ROOFS OF PARÀ

For a company so well-known for offering sun protection, Parà also relies on the sun as a major energy source. There are currently over 215,000 square feet of photovoltaic solar panels installed on the roofs of the Pontirolo Nuovo and the Sovico plants. These panels are able to produce approximately 1,000 kw/h of clean renewable energy.



ÖEKO-TEX® CERTIFICATION

To help protect the environment, Tempotest has received ÖEKO-TEX® Standard 100 certification. An Öeko-Tex certified fabric means that it does not contain any harmful products and is in harmony with the environment.

REACH REGULATION COMPLIANT

On June 1st, 2007, the REACH Regulation (CE) n. 1907/2006 was enacted by the European Parliament. This regulation is responsible for publishing an individualized *Candidate List* of substances considered harmful to human health and the environment. All products placed on the market cannot contain more than 0.1% (by weight) of such substances without it being clearly indicated to the consumer that such a presence exists. All Tempotest and Tempotest Star Collection products comply with REACH and do not contain more than 0.1% of any of the substances now listed on the *Candidate List*. Furthermore, Parà is committed to monitoring any future updates to the chemical substances listed on the aforementioned *Candidate List*. This continual monitoring is in an effort to quickly intervene if ever a newly added substance was used by a supplier during the production of any raw materials supplied to us. Our use of only the highest-quality suppliers has meant that this issue has never occurred to date.

USE OF FORMALDEHYDE

Formaldehyde is a volatile organic compound (VOC) and is used in many textile production processes. When these types of fabrics are located in closed areas with no ventilation, they may cause discomfort to some people. Although all of Parà's products meet the standards provided by Öeko-Tex Standard 100 (formaldehyde content < 300 ppm), Parà was able to further reduce the formaldehyde content in its fabrics to much lower levels without affecting the performance features of the fabric itself.

OEKO-TEX®
CONFIDENCE IN TEXTILES
STANDARD 100
971521.0 CENTROCOT
Tested for harmful substances.
www.oeko-tex.com/standard100



VISUALIZER

APP FOR SMARTPHONES & TABLETS



Tempotest Visualizer USA is the application for tablets and smartphones that allows you, through the technology of virtual reality, to easily choose the type of awning and the Tempotest fabric suitable to satisfy any architectural need.

Tempotest Visualizer allows you to photograph your home or building, project an awning style in 3D, and insert any combination of fabrics available from the Tempotest collection. You select the placement of the virtual awning on the building. Its size can then be adjusted according to your preference while keeping the real designs and repeat scale of the Tempotest fabric. The awning will be visible from different angles as if it were actually mounted.

Visualize an awning on your building in five steps:

TAKE a photo of a home or building using your phone's camera.

SELECT the photo in the app from your library and choose one or more awnings.

CHOOSE the type of awning and the Tempotest fabric that fits your style.

PLACE and adjust the awning with the tools on the device.

SAVE the photo to share.

A full tutorial highlighting all the features and tools can be found on YouTube.

Tempotest Visualizer uses the innovative technology of virtual reality to take the guess work out of choosing your awning style and pattern. We make it simple to visualize the right Tempotest fabric for your home or business.



BEAUTY IS TIMELESS

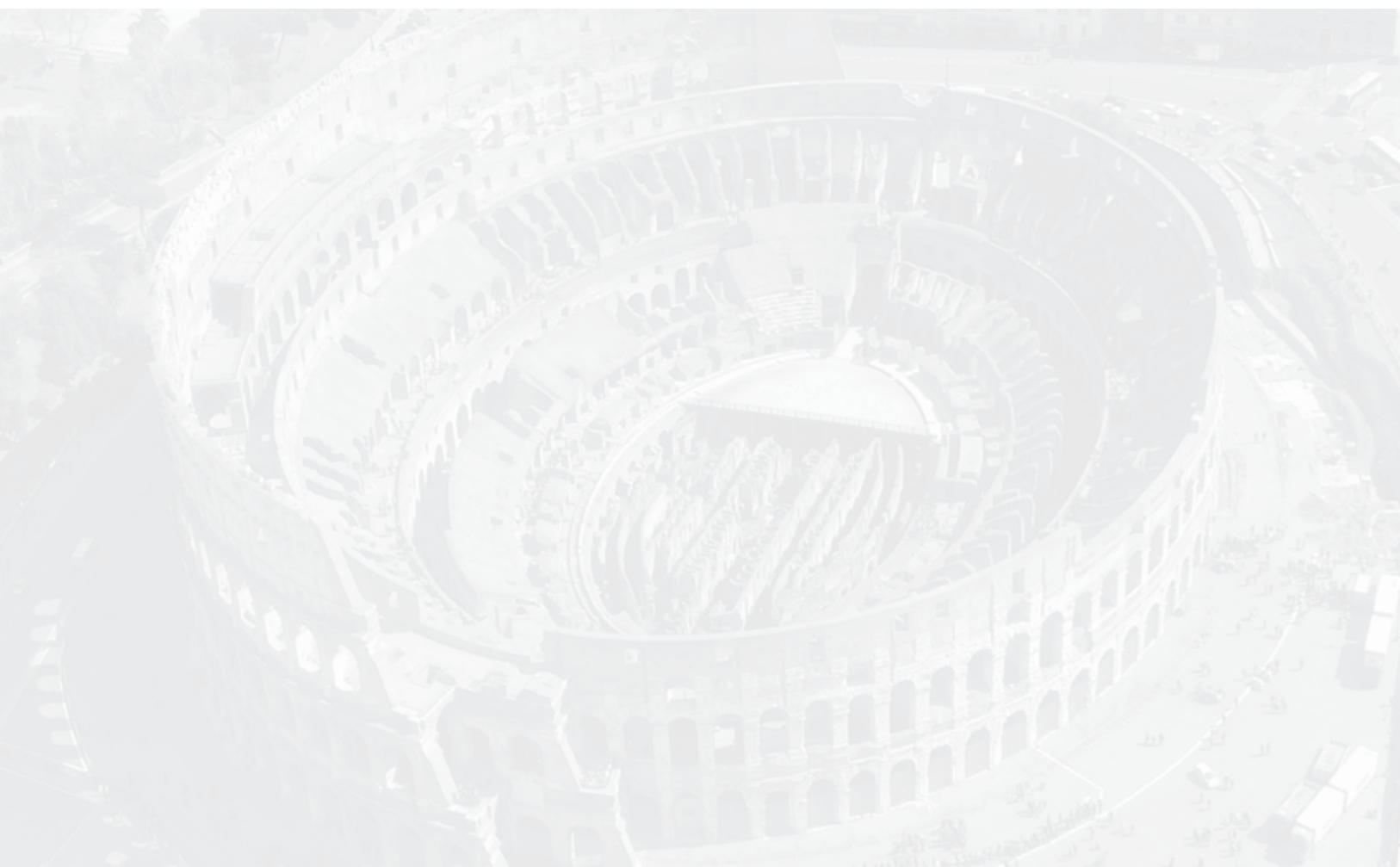


DISTRIBUTED EXCLUSIVELY BY :



miami[™]
CORPORATION

800.543.0448 | MIAMICORP.COM



PARA
TEMPOTEST[®]
ITALIAN PERFORMANCE FABRICS

AWNING & SHADE COLLECTION